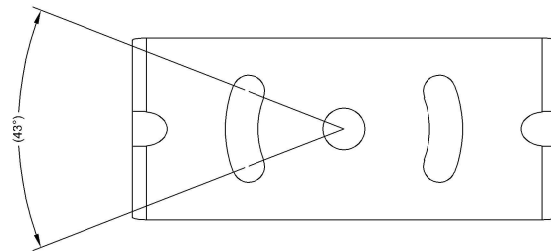
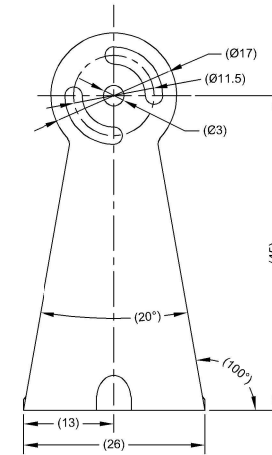
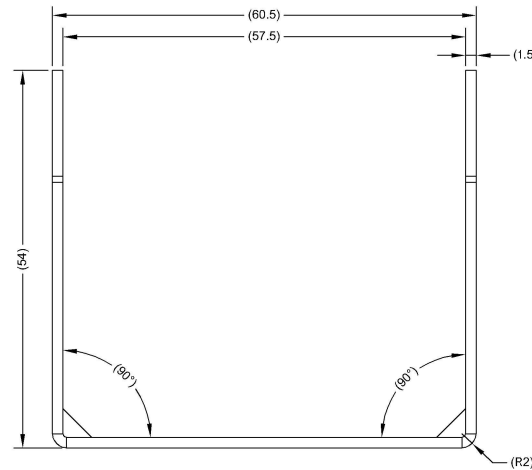
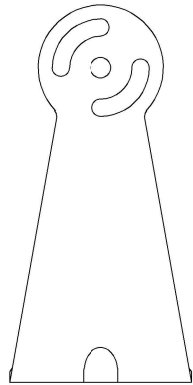
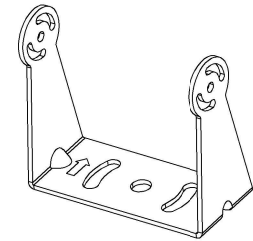
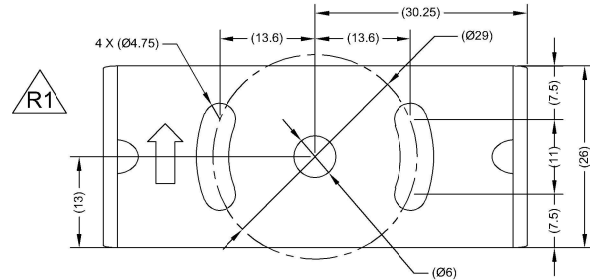


Revision Notes.				
R1 - ARROW ADDED TO PREVENT REVERSE ASSEMBLY AND NOTES UPDATED AS PER P1504.				
APA: J. LAM	Drawn:s. GOVENDER	Checked:J. STEWART	Approved:s. LAVER	Date: 26/11/21



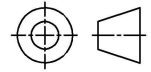
NOTES:

1. INCLUDES 6x MOUNTING SCREWS (M2.5x4.5mm), 6x SPRING WASHERS & 6x WASHERS.
2. FINISH IS BLACK POWDER COATING.
3. MATERIAL IS 1.5MM SPCC COLD ROLLED STEEL.

PROPRIETARY NOTICE

THIS DESIGN AND TECHNICAL INFORMATION APPEARING ON THIS DRAWING IS THE PROPERTY OF BRIGADE ELECTRONICS, AND IS DISCLOSED IN CONFIDENCE. IT IS NOT TO BE COPIED, REPRODUCED, REVEALED TO OR EXPROPRIATED BY OTHERS, EITHER IN WHOLE OR IN PART WITHOUT THE EXPRESS WRITTEN CONSENT OF BRIGADE ELECTRONICS.

BRIGADE[®]
www.brigade-electronics.com

Assembly Pl Approval MARK WU (26/02/15)	Approved by B.JOHN	Checked by R.BATES	Drawn by M.BUTLER
Angle of Projection 	Units mm	Scale N/A	Released 27/02/15
	Status RELEASED	Assembly Ref VBV-62XC-BKT	
	Part No 3893A	BE-003018-01-14	